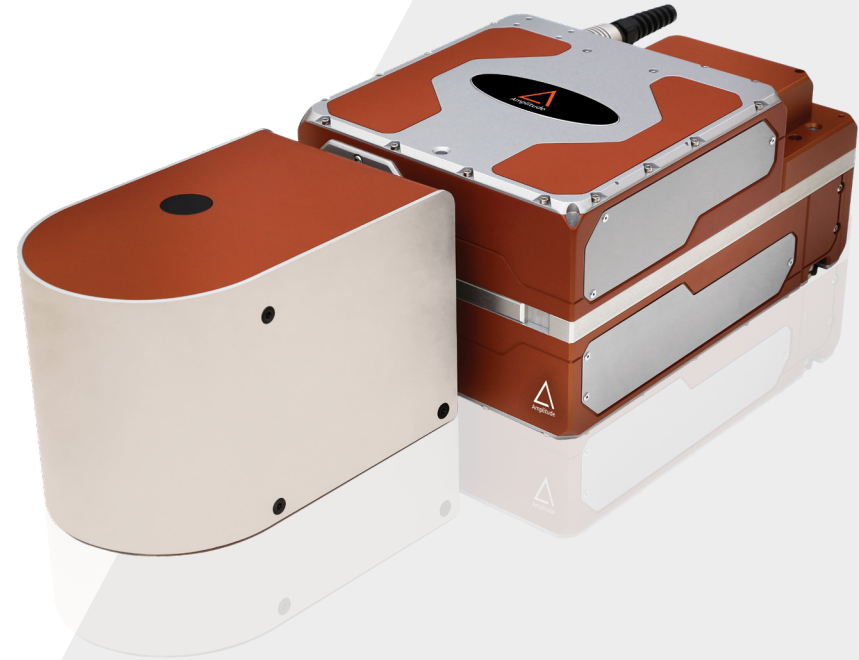


# Yuja MULTI

*Programmable multi spot femtosecond laser*

Yuja MULTI allows you to dynamically split the single beam of Yuja laser into multiple spots or multiple beams or even change your standard round beam.

Programmable spatial beam shaping contributes to increase the application range of femtosecond processes by enlarging its field from direct surface marking of complex shapes to drilling and machining in the bulk of transparent materials.



## Applications

### Industry:

- > Microelectronics
- > Micromachining

### Medical:

- > Medical Device Manufacturing

## Key Features

- > Multidot marking in the bulk
- > Parallel processing
- > Texturing and Surface treatment

# Specifications

## Yuja MULTI

Average Power	>10 W	
Energy in Shaped Pulse	80 $\mu$ J	
Pulse Duration	< 500 fs	
Repetition Rate	0 - 40 MHz	
Wavelength	1030 nm	
Bandwidth	< 5 nm	
Pattern Changing Time (max)	100 ms	
Pulse To Pulse Energy Stability	< 0.5 % rms over 12 hours	
F- theta Focal Length	160 mm	80 mm
Single Spot Diameter	40 $\mu$ m	20 $\mu$ m
Minimum Pitch	20 $\mu$ m	10 $\mu$ m
Field	5 mm	2,4

## Utilities

Dimensions	61 x 23 x 17cm
------------	----------------

# Compatibility



Magma



Satsuma



Tangerine



Tangor



Yuja