

For every industrial need

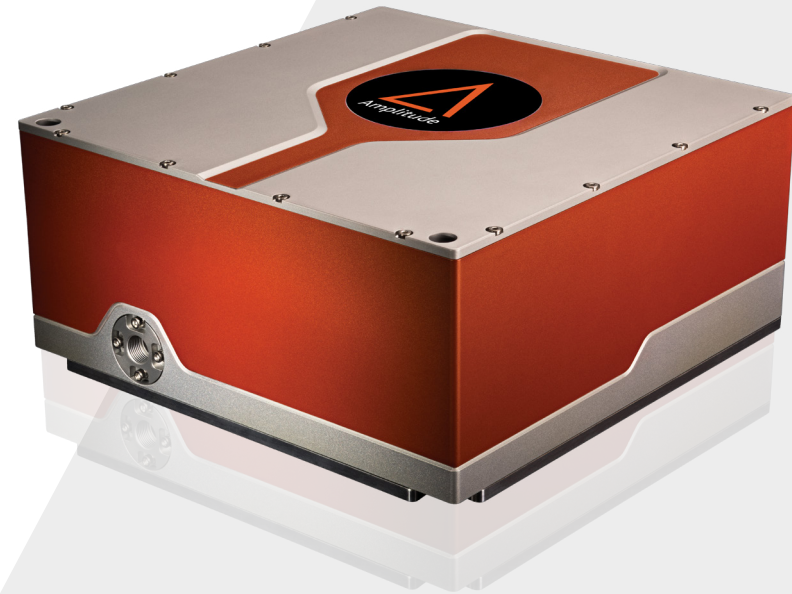
# Goji

*High precision, compact femtosecond laser*

## *A medical marvel*

Goji benefits from more than 15 years of experience in laser surgical applications. It has been specifically engineered and tested to meet the requirements of today's most demanding medical and industrial markets.

Goji ultra-compact platform features an industry-leading short pulse duration together with a high average power and an exceptional beam quality to allow the best-in-class processing quality. It is also ideally suited as a pump source for a tunable optical parametric oscillator and for applications in optogenetics and multi-photon imaging.



## Applications

### **Medical:**

> Laser Surgery

### **Science:**

> Optogenetics  
> OPO-Pumping

## Key Features

- > Ultra-compact and light
- > Industrial design
- > Air-cooled
- > Automated controls



# Specifications

## Goji

## Goji HP

Average Power	> 5 W	
Energy Per Pulse	> 125 nJ	> 500 nJ
Pulse Width	< 150 fs	
Repetition Rate	40 MHz	10 to 40 MHz
Central Wavelength	1030 +/- 5 nm	
Beam Quality	TEM00, M <sup>2</sup> <1.2	
Beam Circularity	> 87%	
Long Term Mean Power Stability	< 1 % rms over 100 h	
Warm-up Time	< 30 min	

### Dimensions

All Models	25 x 25 x 13 cm
------------	-----------------

### Cooling

All Models	Air-cooled
------------	------------

### Weight

Laser Head	10 kg
Power Supply 1	11 kg

