

*For every industrial need*

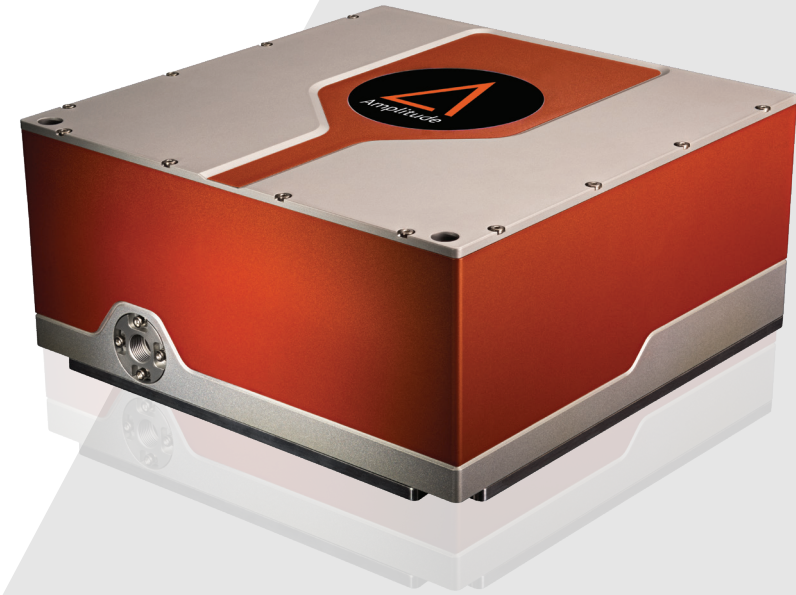
# GOJI

*High precision, compact femtosecond laser*

*A medical marvel*

Goji benefits from more than 15 years of experience in laser surgical applications. It has been specifically engineered and tested to meet the requirements of today's most demanding medical and industrial markets.

Goji ultra-compact platform features an industry-leading short pulse duration together with a high average power and an exceptional beam quality to allow the best-in-class processing quality. It is also ideally suited as a pump source for a tunable optical parametric oscillator and for applications in optogenetics and multi-photon imaging.



## Applications

**Medical:**

> Laser Surgery

**Science:**

- > Optogenetics
- > OPO-Pumping

## Key Features

- > Ultra-compact and light
- > Industrial design
- > Air-cooled

# Specifications

Goji

Pulse Width (fs)	<200
Repetition Rate	10 MHz
Max. Power (W)	5
Max Energy (μJ)	0.5
Reference Repetition Rate	10 MHz
Central Wavelength	1030 +/- 5 nm
M <sup>2</sup>	<1.2
Beam diameter (mm)	3,35 +/- 0,25 mm
Astigmatism	<50%
Waist assymetry	<10%
Ellipticity	<13%
Pointing stab	<100 μrad
Power stability (8 hrs)	<1% RMS
p to p stability (12 hrs)	<2% RMS

## Dimensions

Laser Head	25 x 25 x 12 cm
Power Supply	3U 19" rackable 483 x 392 x 133 cm

## Cooling

All Models	Air-cooled
------------	------------

## Weight

Laser Head	10 kg
Power Supply	11 kg

