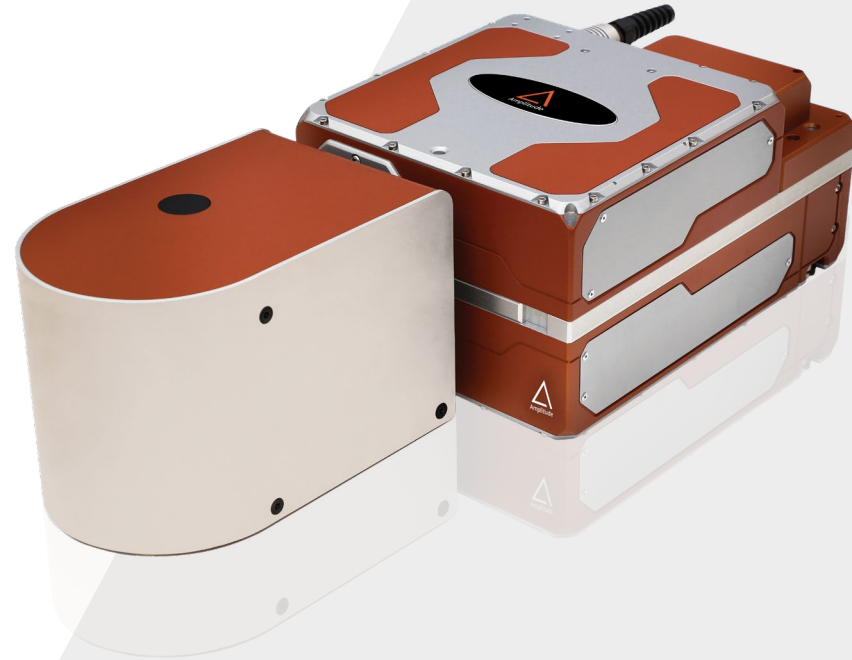


Yuja MULTI

Programmable multi spot femtosecond laser

Yuja MULTI allows you to dynamically split the single beam of Yuja laser into multiple spots or multiple beams or even change your standard round beam.

Programmable spatial beam shaping contributes to increase the application range of femtosecond processes by enlarging its field from direct surface marking of complex shapes to drilling and machining in the bulk of transparent materials.



Applications

Industry:

- > Microelectronics
- > Micromachining

Medical:

- > Medical Device Manufacturing

Key Features

- > Multidot marking in the bulk
- > Parallel processing
- > Texturing and Surface treatment

Specifications

Yuja MULTI

Average Power	>10 W	
Energy in Shaped Pulse	80 μJ	
Pulse Duration	< 500 fs	
Repetition Rate	0 - 40 MHz	
Wavelength	1030 nm	
Bandwidth	< 5 nm	
Pattern Changing Time (max)	100 ms	
Pulse To Pulse Energy Stability	< 0.5 % rms over 12 hours	
F- theta Focal Length	160 mm	80 mm
Single Spot Diameter	40 μm	20 μm
Minimum Pitch	20 μm	10 μm
Field	5 mm	2,4

Utilities

Dimensions	61 x 23 x 17cm
------------	----------------

Compatibility



Magma



Satsuma



Tangerine



Tangor



Yuja